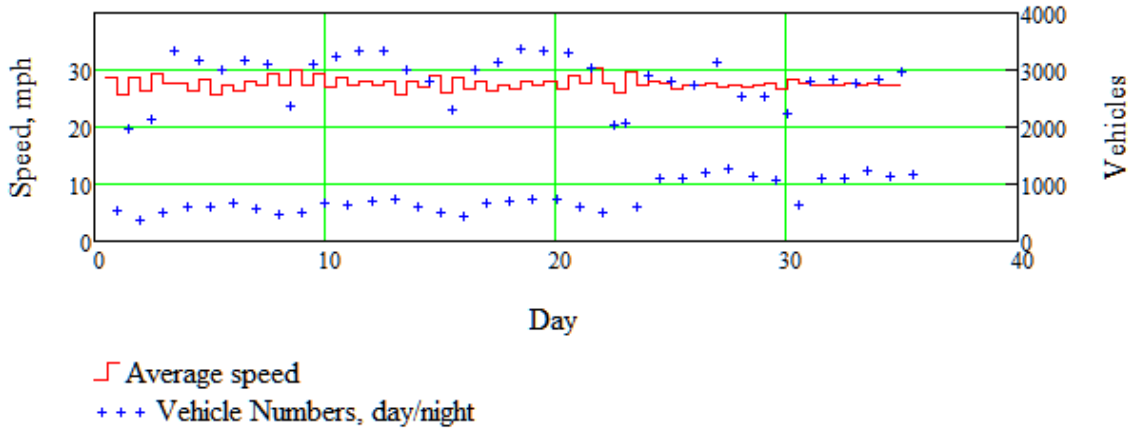


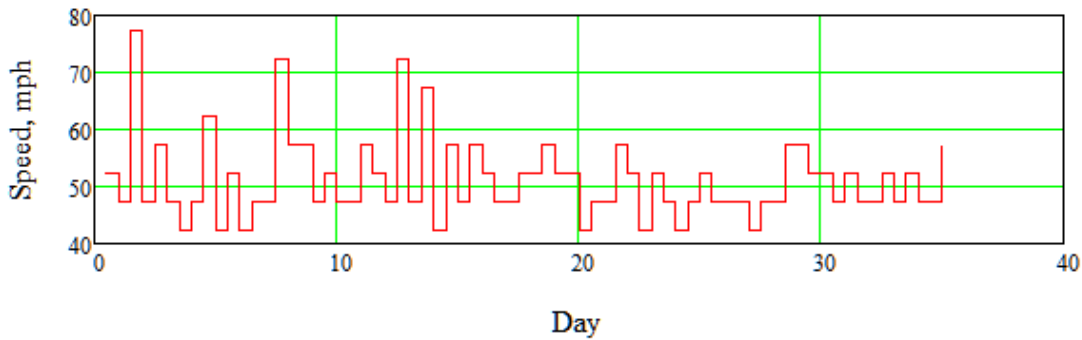
Westcotech Vehicle Activated Sign Hobwell Lane 30 March 2018 (approximately) to 5 May 2018

Average speed and numbers of vehicles in each time interval



Maximum Speed in each period

Maximum speed in each time interval



Note: Day/night split incorrect up to 22 April as speed sign had an incorrect time
Day / night analysis not given

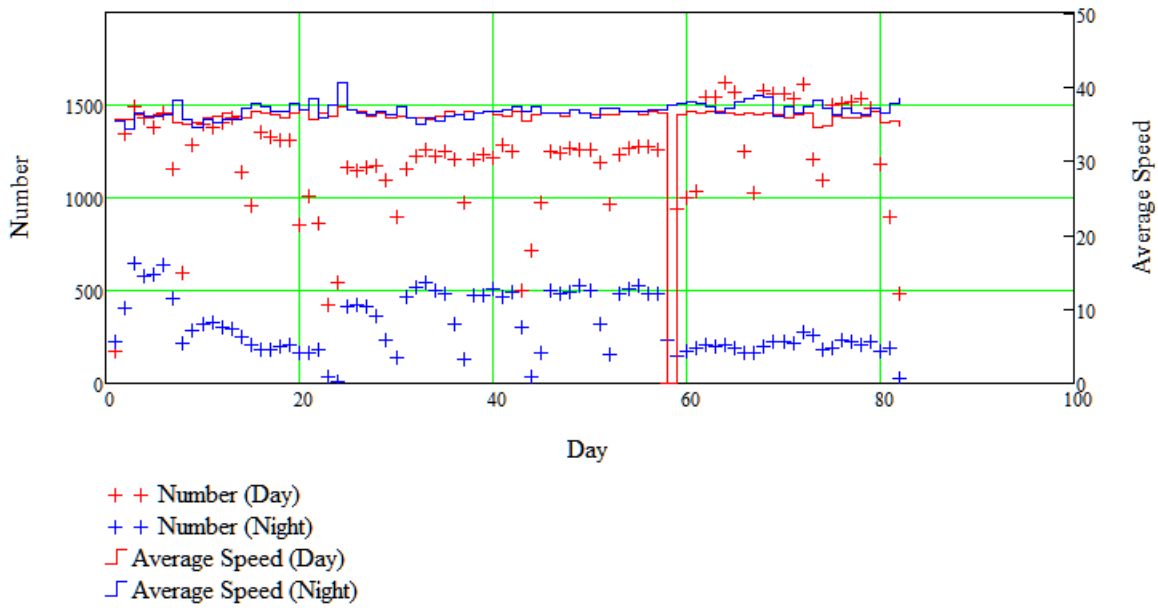
Daily averages

- Number of vehicles 3606
- Average speed 24 mph
- 85 percentile speed 29 mph

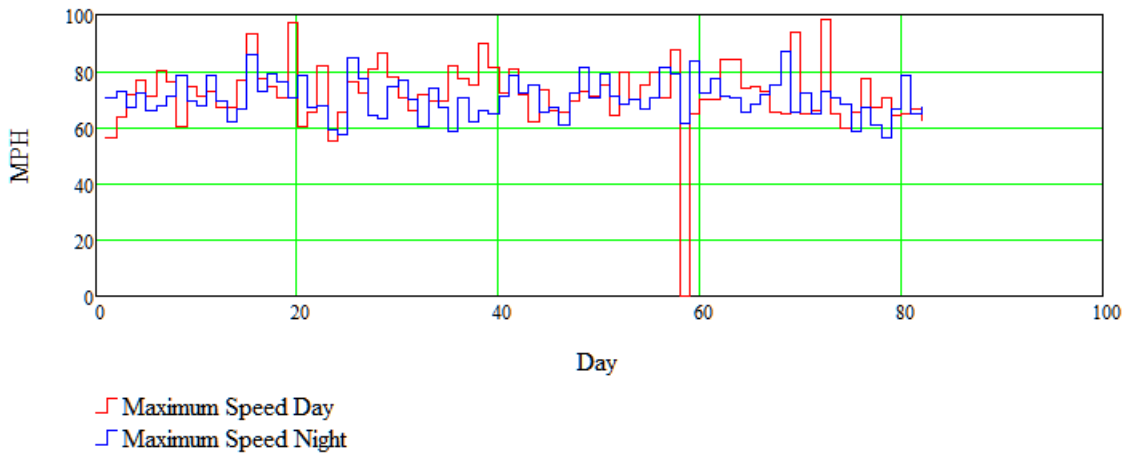
Period of 35 days

3M Vehicle Activated Sign Near Guide HQ 5 March 2018 (approximately) to 28 May 2018

Average speed and numbers of vehicles in each time interval



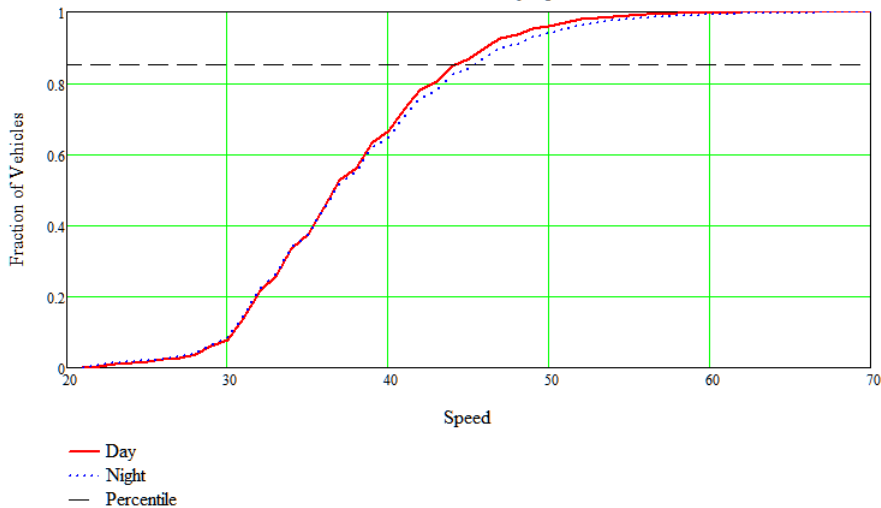
Maximum Entry Speed (24 hour period)

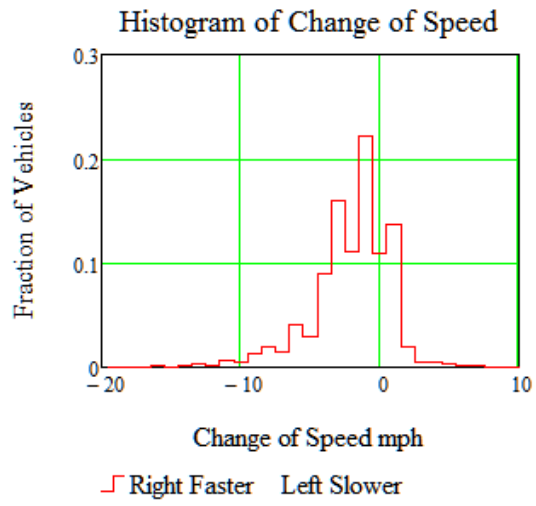


Note

Timing of readings incorrect up to 5 May approximately, day/night readings incorrect.

Distribution of Entry Speed





Daily averages

Number of vehicles 1488

Average speed 36 mph

85 percentile speed 45 mph

Period of 83 days