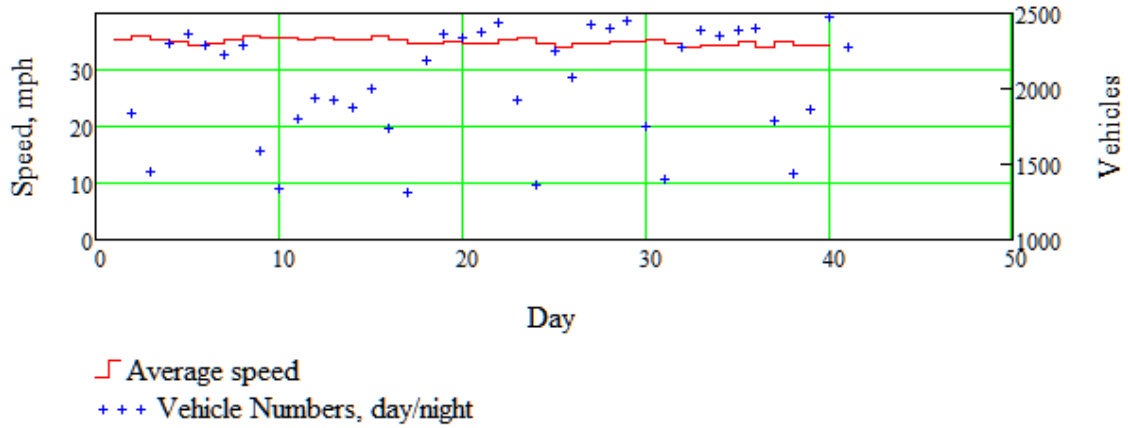


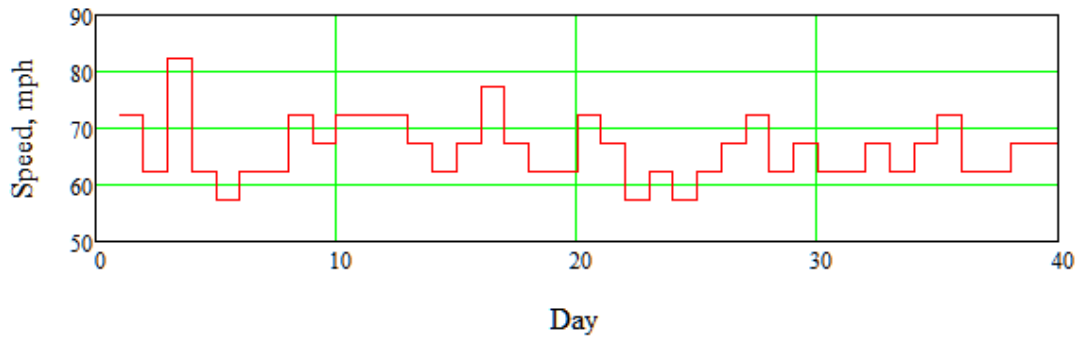
Westcotech Vehicle Activated Sign Wild Country lane 15 October 2017 to 23 November 2017

Average speed and numbers of vehicles in each time interval

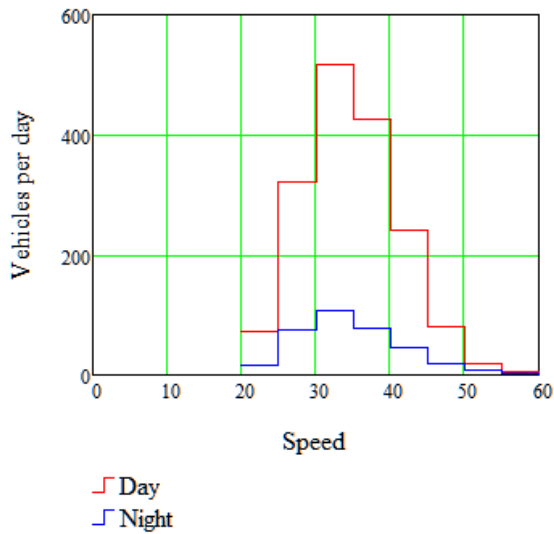


Maximum Speed in each period

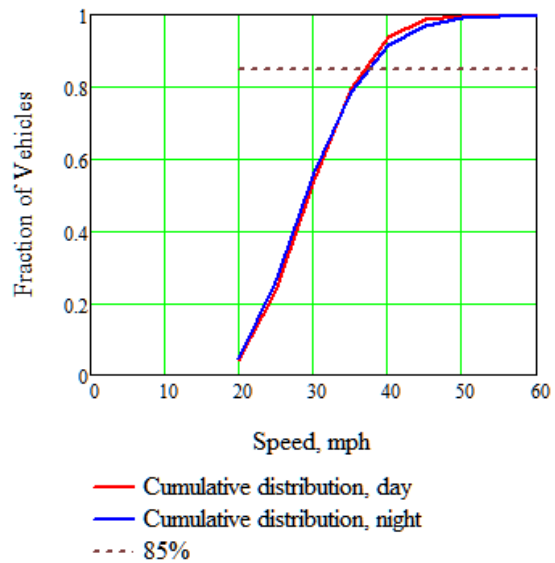
Maximum speed in each time interval



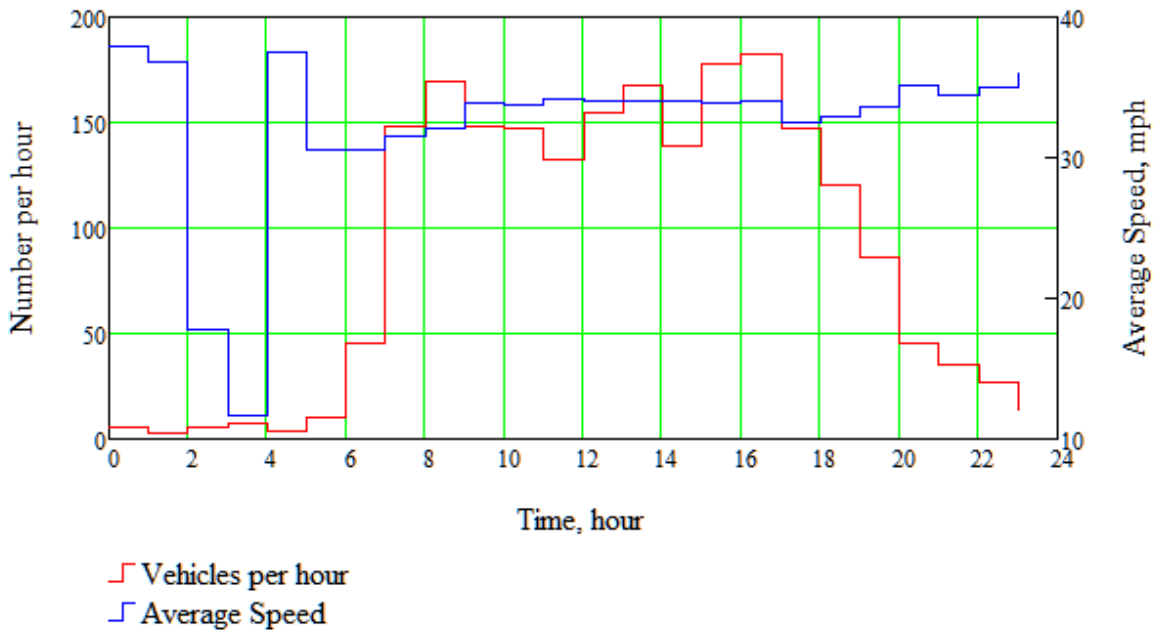
Speed and Number of Vehicles



Speed Distribution



Average Number of Vehicles Per Hour and Speed



| | Day | Night |
|--------------------|------|-------|
| Number of Vehicles | 1683 | 352 |
| Average Speed, mph | 31.8 | 31.5 |
| 85% speed, mph | 39.5 | 40 |

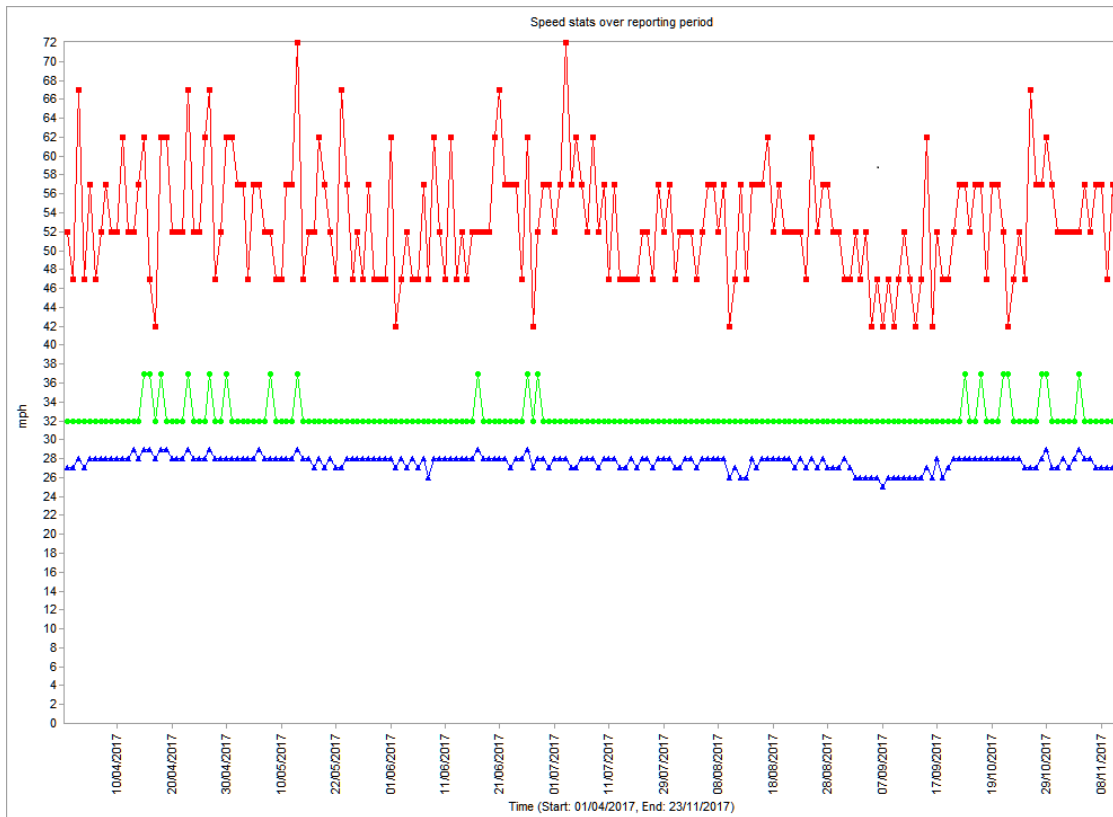
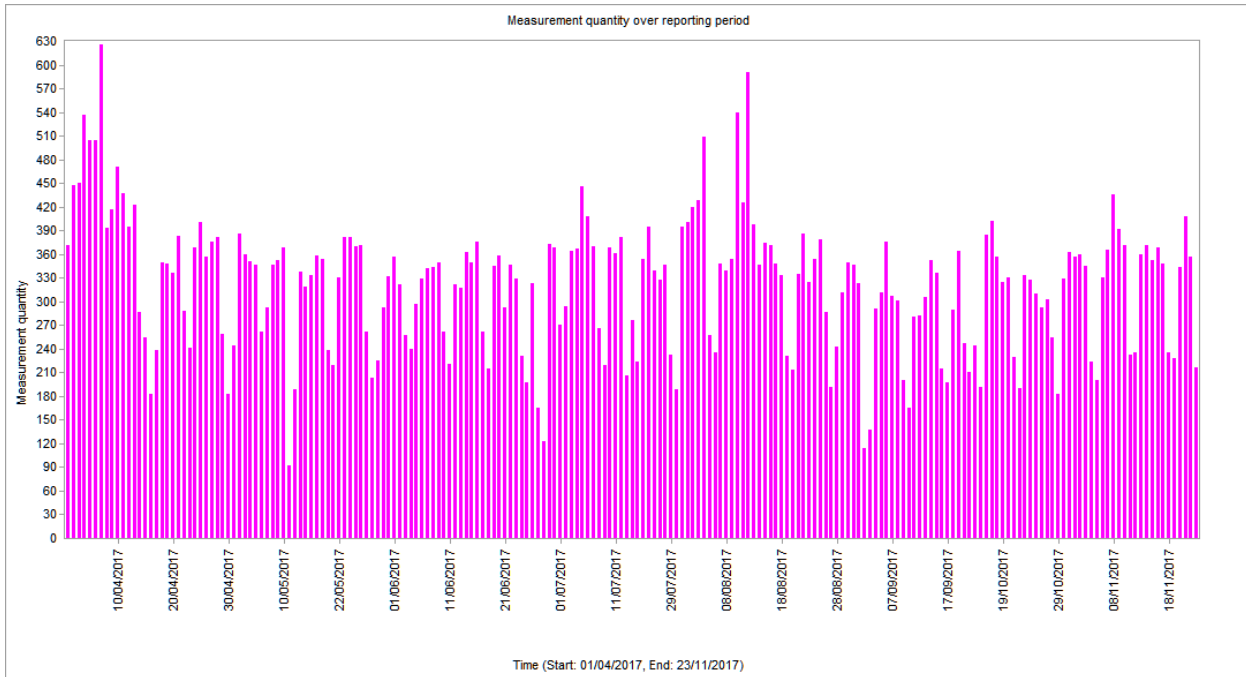
High recorded speeds:

| | |
|-------------|----|
| 80 - 85 mph | 1 |
| 75 - 80 mph | 1 |
| 70 - 75 mph | 9 |
| 65 - 70 mph | 23 |
| 60 - 65 mph | 69 |

Period of 41 days

3M Vehicle Activated Sign Yanley Lane

1 April 2017 to 23 November 2017



Red = max speed
Green = 85% speed
Blue = average speed