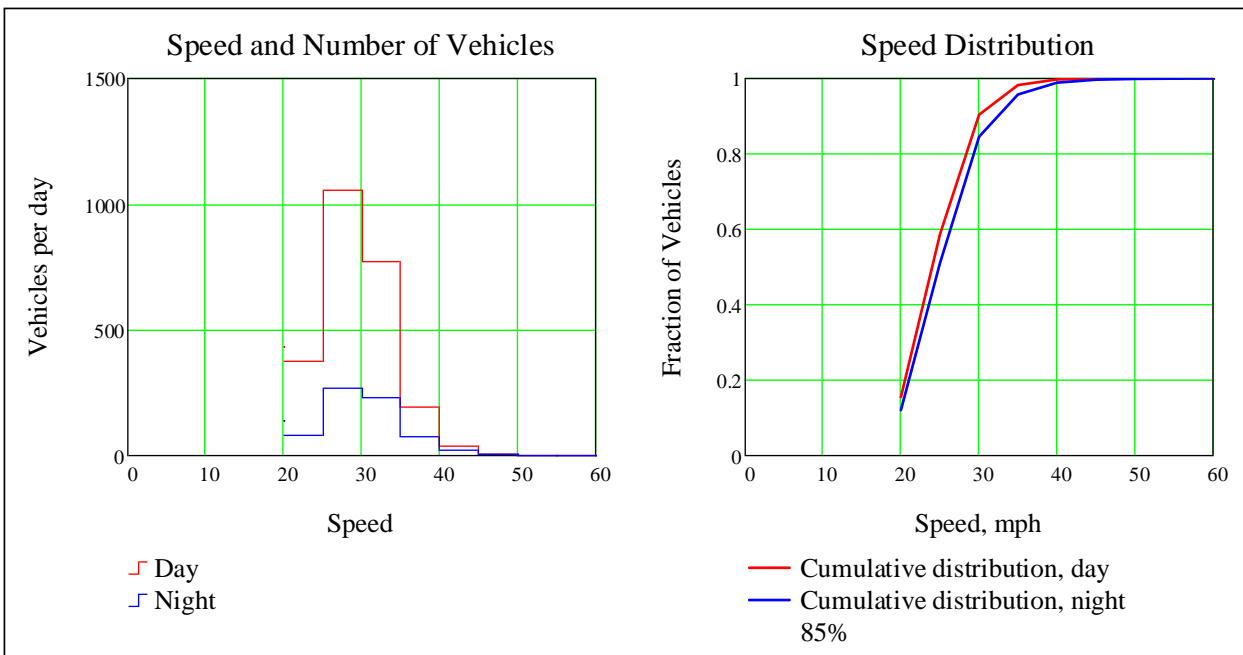
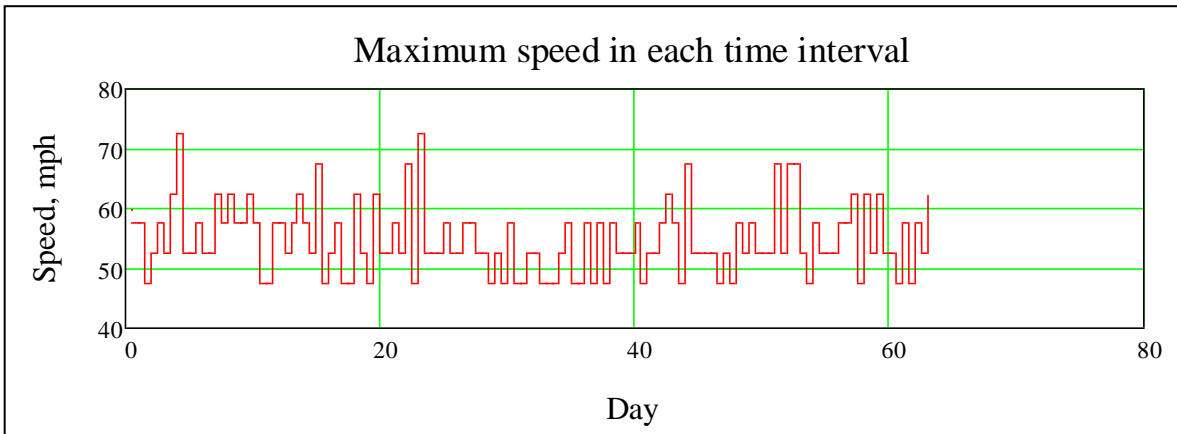
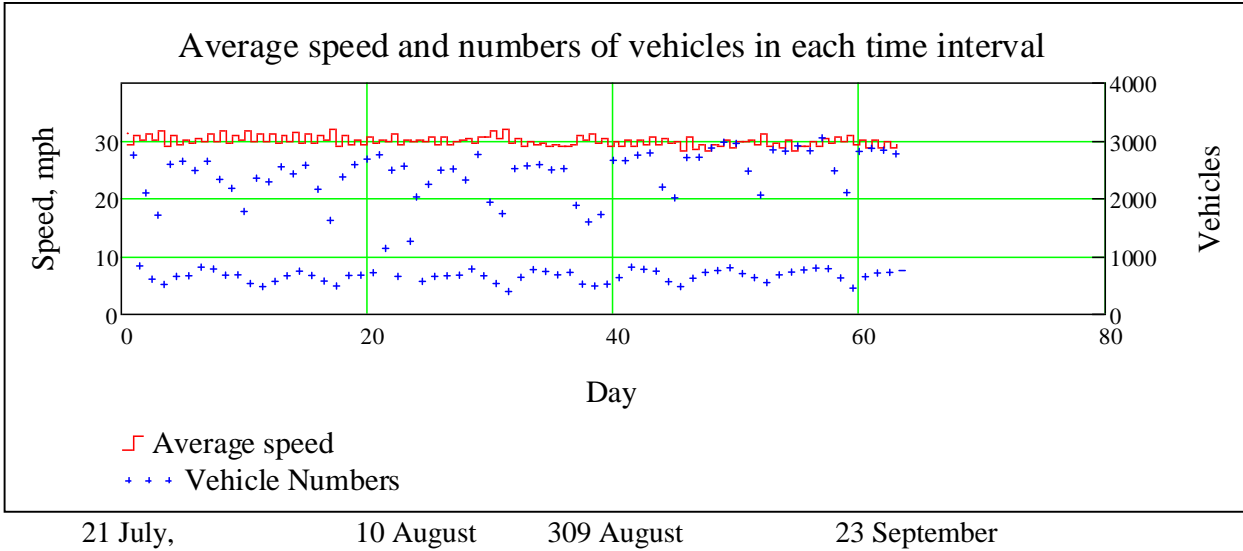
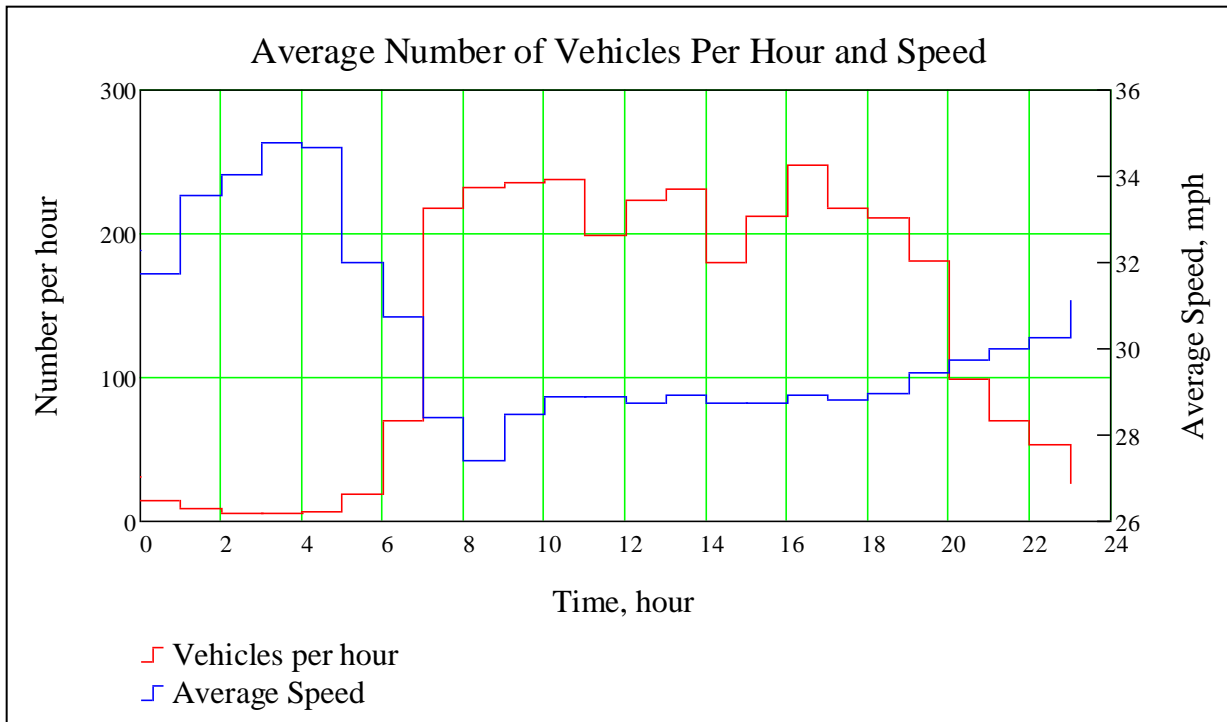


Westcotech Vehicle Activated Sign 45 Long Ashton Road

21 July to 23 September 2016





	Day	Night
Number of Vehicles	2437 (2453)	685 (704)
Average Speed, mph	26.5 (26.6)	27.4 (27.7)
85% speed, mph	31.7 (31.7)	32.7 (32.9)

Numbers in brackets from the previous period 20 May to 20 July

I wish to record that I do not think the sign should have 240 volts inside it. Dave Addis assured me that there is an earth leakage breaker in the supply, but I think we could be risking the sign itself. If we want to leave it where it is semi permanently then we should sort out a proper 12V power supply and lead the 12V cables into the camera through a grommet so the door can be closed properly. At present only one catch fits properly.