

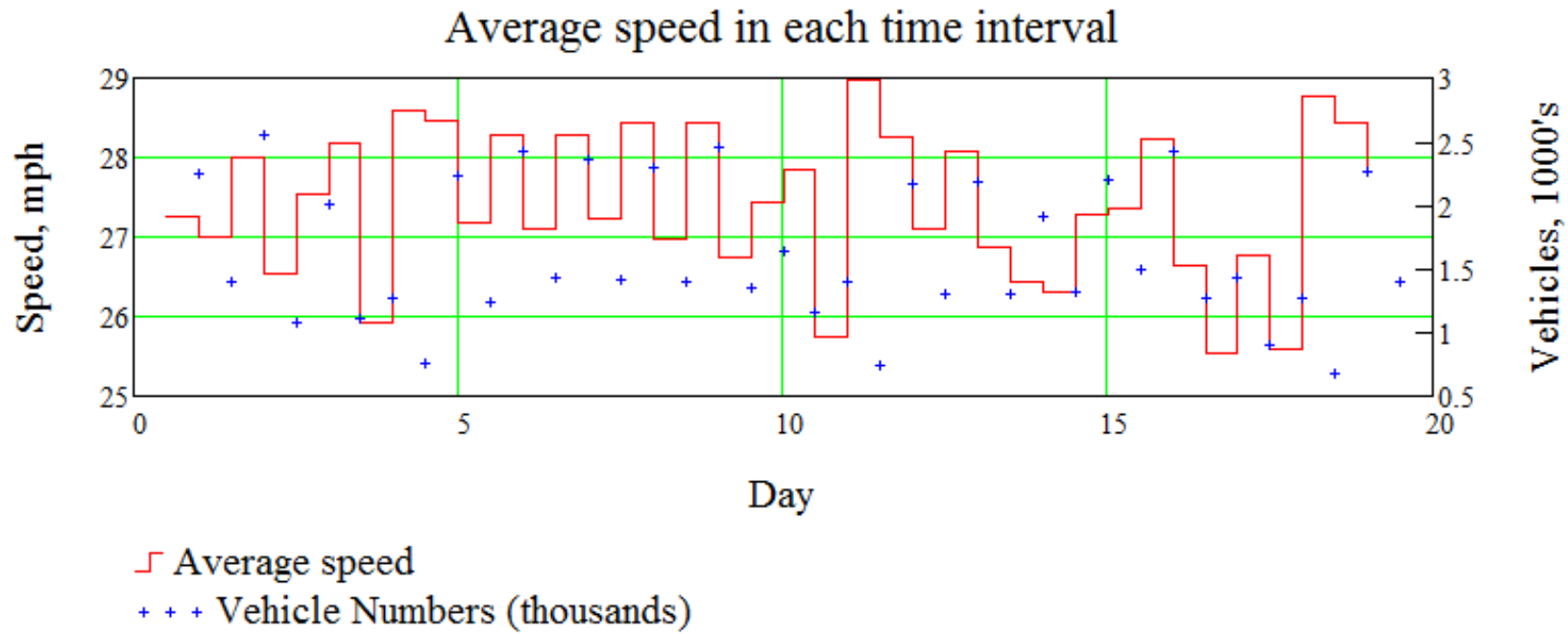
Westcotec Driver Feedback Sign

First Results

November, December 2015

Angel Inn

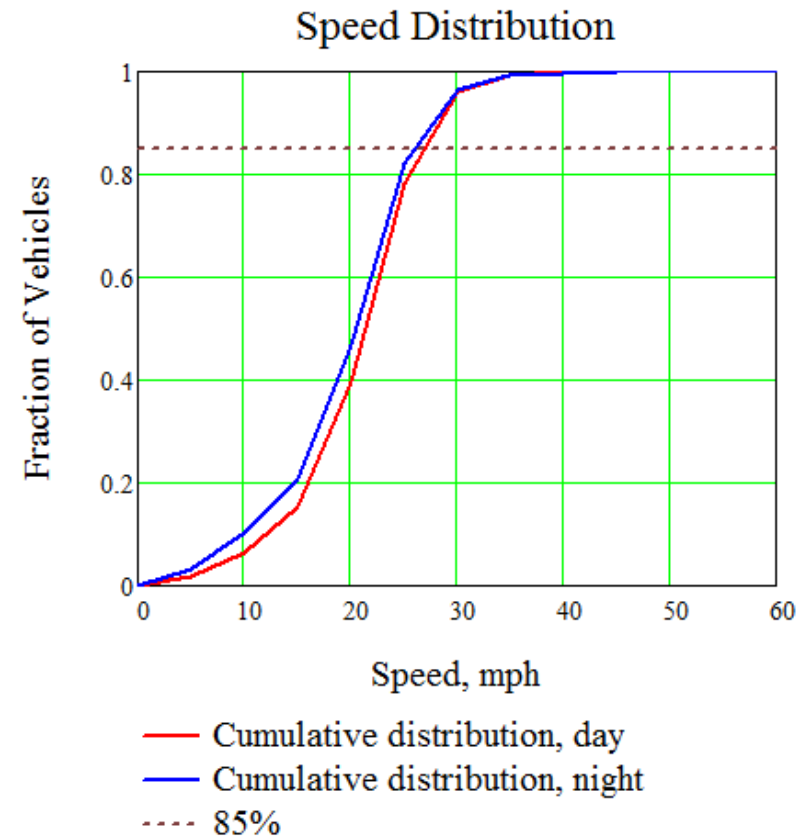
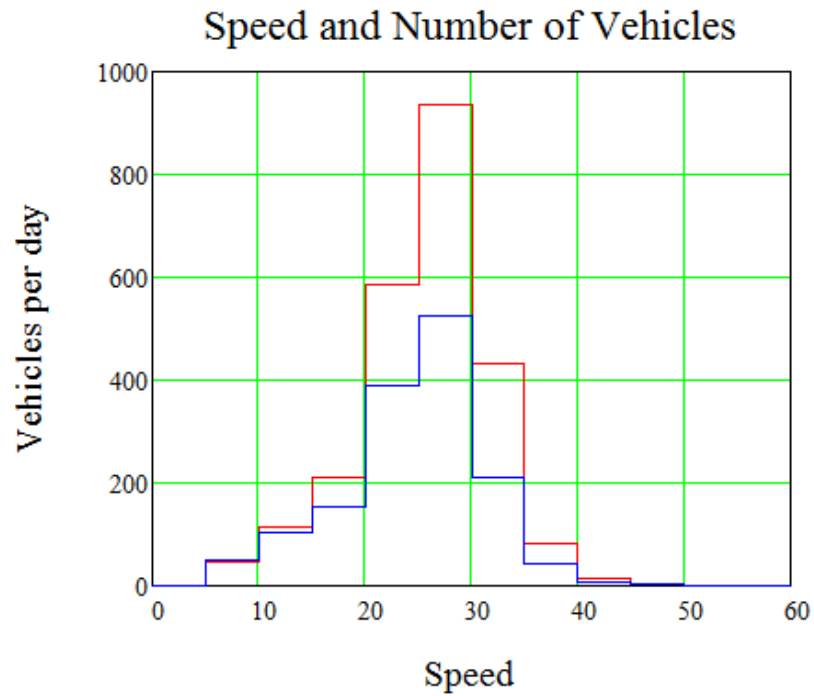
Day/Night speed averages 6:00 to 18:00 and 18:00 to 6:00



Speeds of 20 mph or less than excluded

Angel Inn ctd

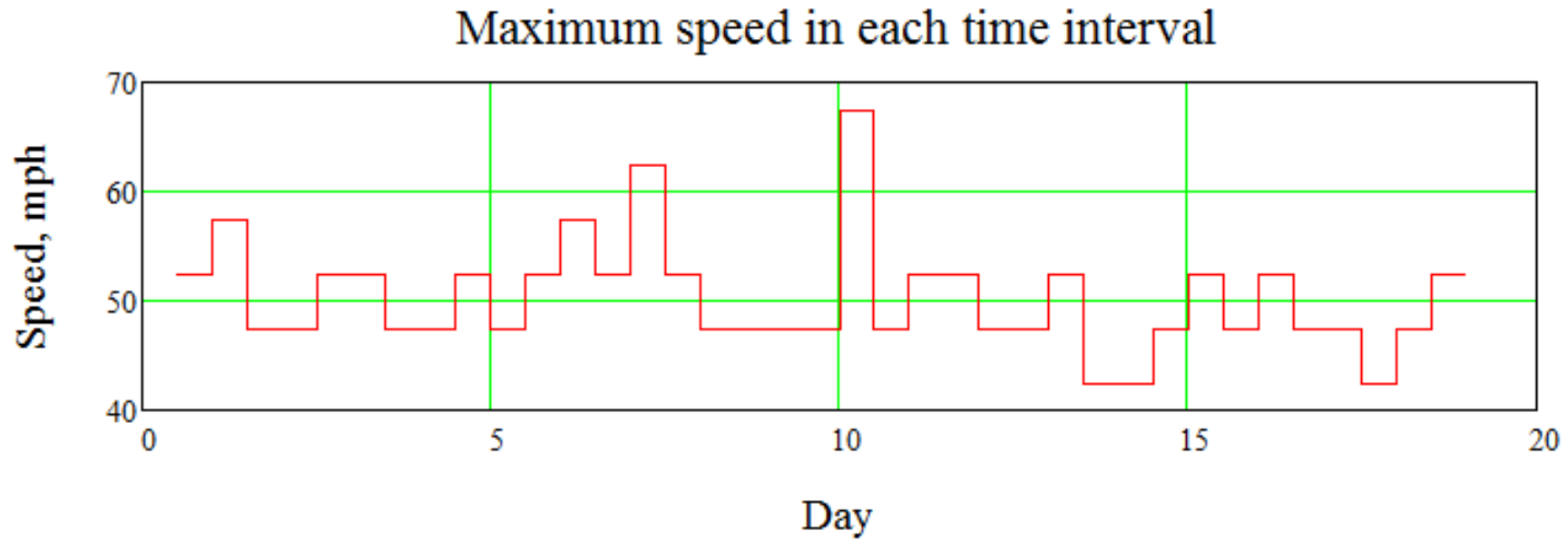
Distributions, Day and Night All Speeds



Day 06:00 to 18:00, Night 18:00 to 06:00

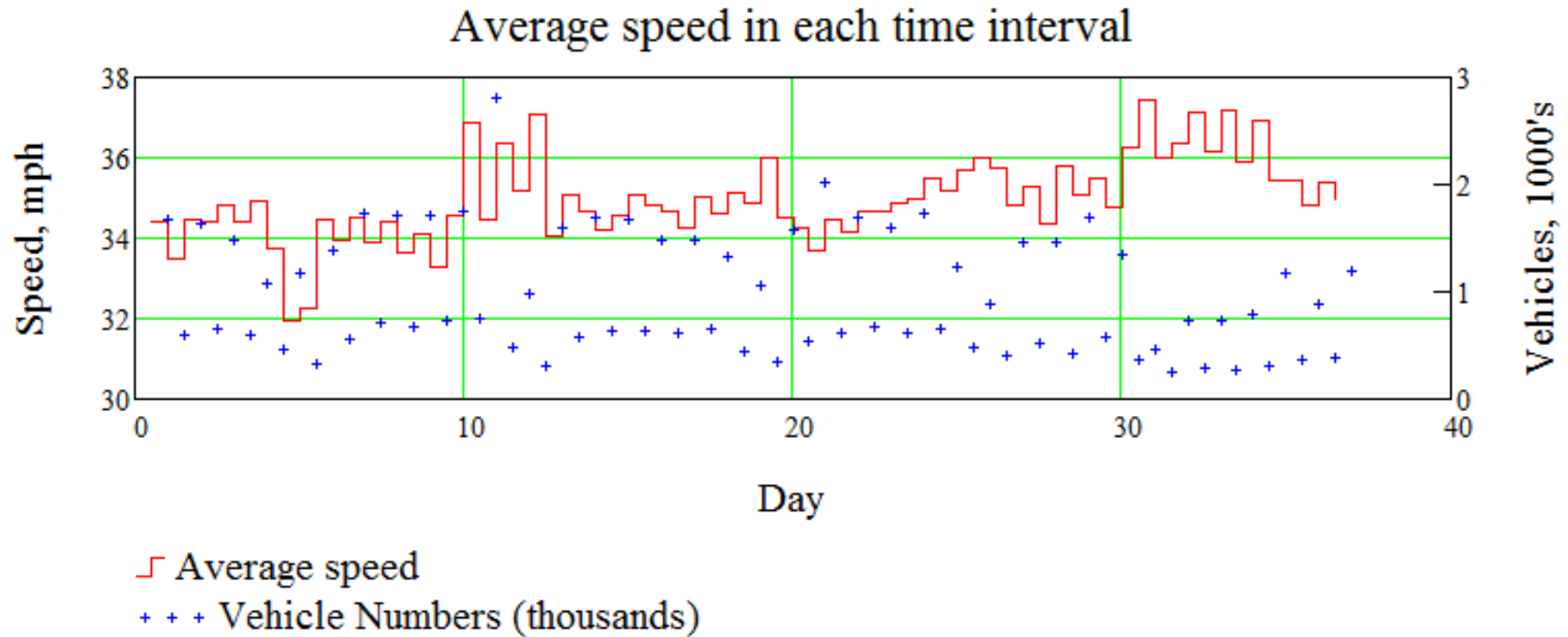
Angel Inn ctd

Maximum Speeds (12 hour periods)



Guide Hut/Wild Country Lane (Easterly)

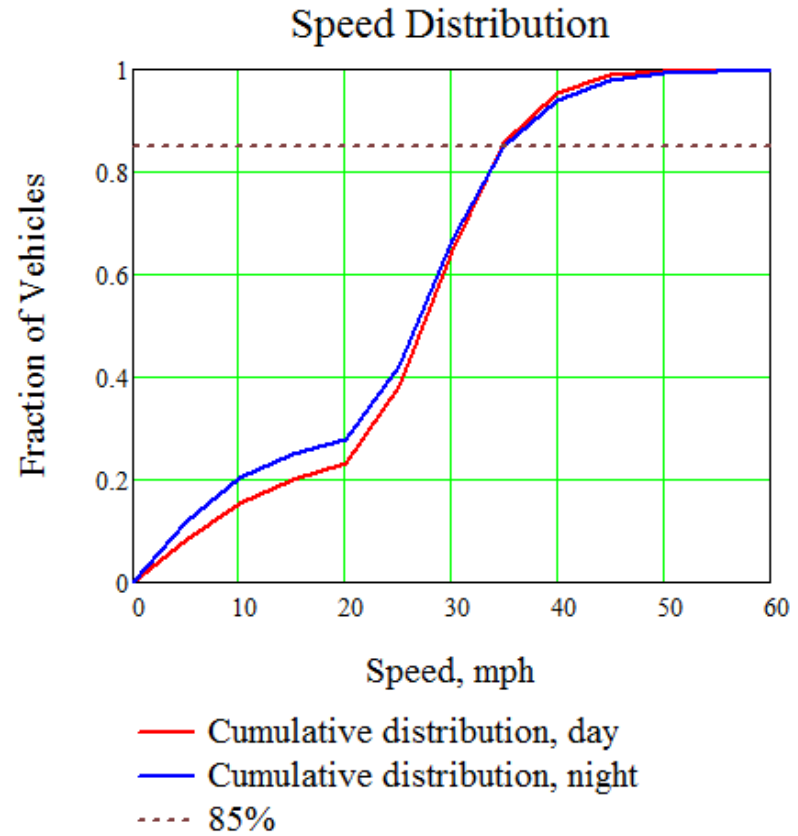
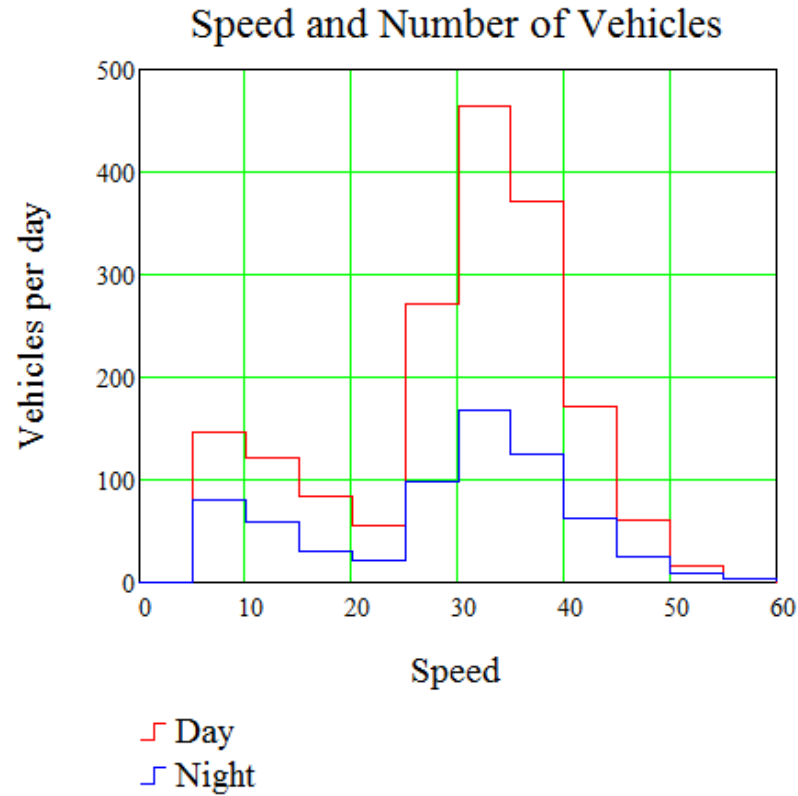
Day/Night averages 6:00 to 18:00 and 18:00 to 6:00



Speeds of 20 mph or less than excluded

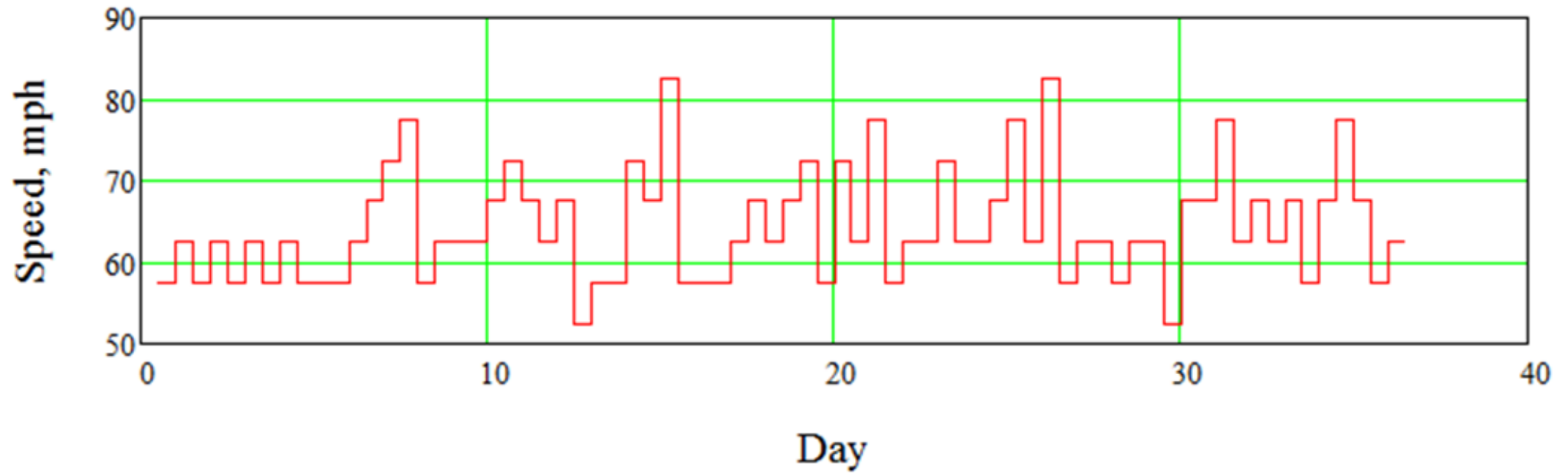
Guide Hut/Wild Country Lane (Easterly) ctd

Distributions, Day and Night All Speeds



Guide Hut/Wild Country Lane (Easterly) ctd

Maximum speed in each time interval



Summary

	Day			Night		
	Vehicles per day	Average speed mph	85 percentile speed, mph	Vehicles per Night	Average speed mph	85 percentile speed, mph
Angel Inn (West going)	2000	24.8	30.1	1222	24.4	29.6
Guide Hut (East going)	1297	31.6	38.7	523	31.6	39.5

Readings less than 20 mph excluded